

AiM Infotech

MBE 9A9CAN 100 ECU

Release 1.01



ECU

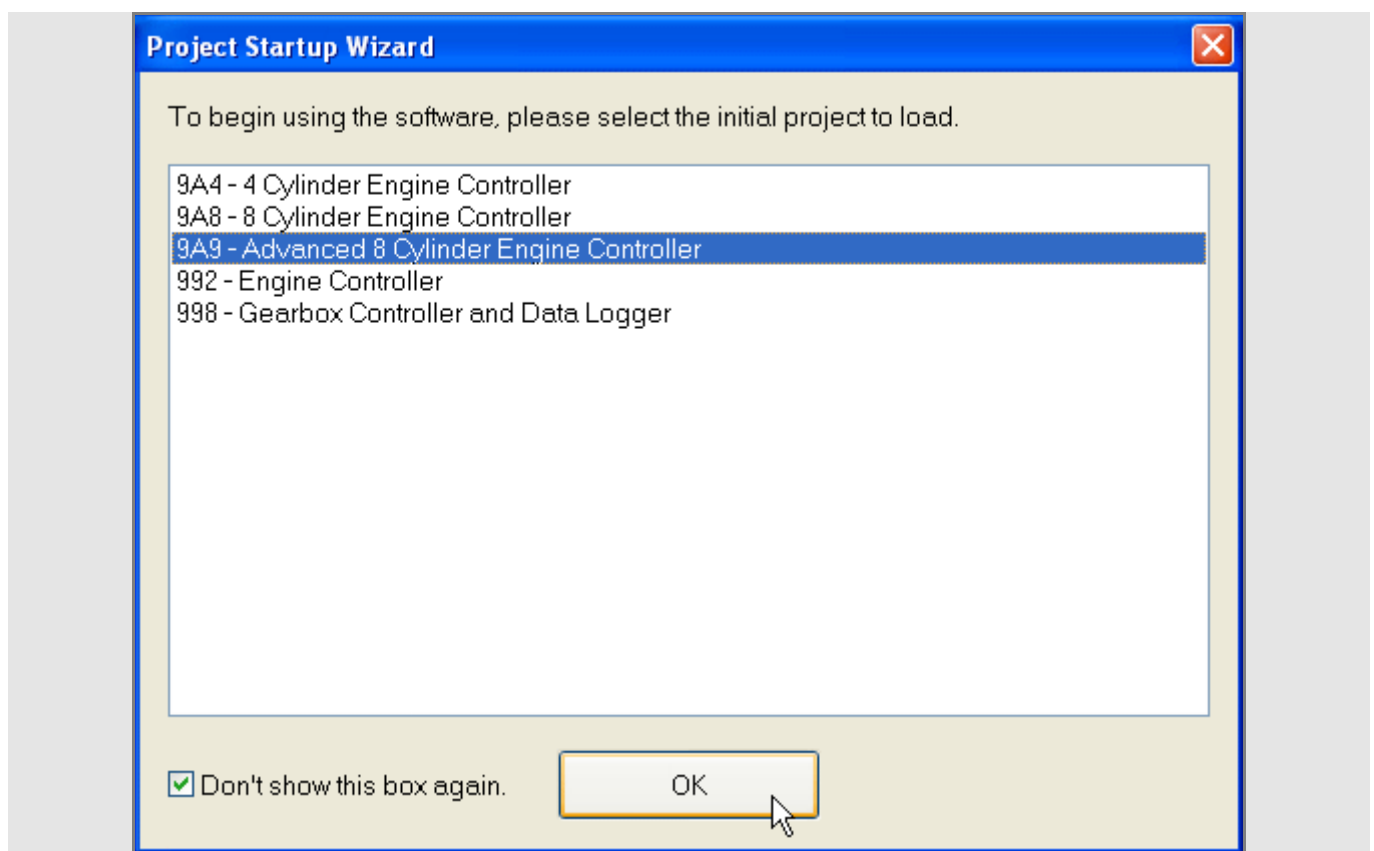


This tutorial explains how to connect MBE 9A9CAN ECU to AiM devices.

1

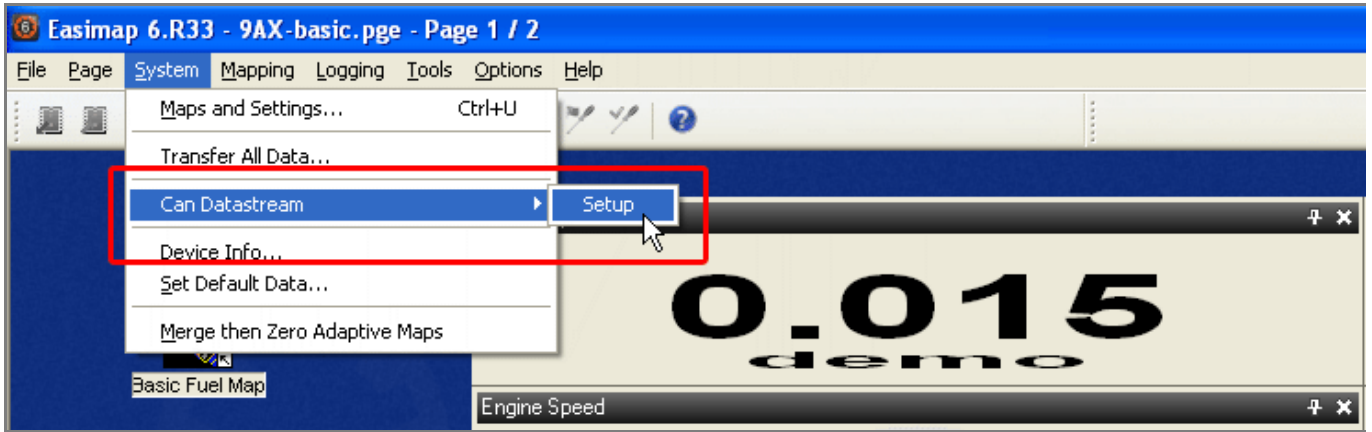
Software Setup

MBE ECU needs to be set up via EasiMap software. Run it and this panel appears.



Select "9A9 – Advanced 8 Cylinder Engine Controller" and press OK.

Follow the path: "System -> Can Datastream -> Setup"

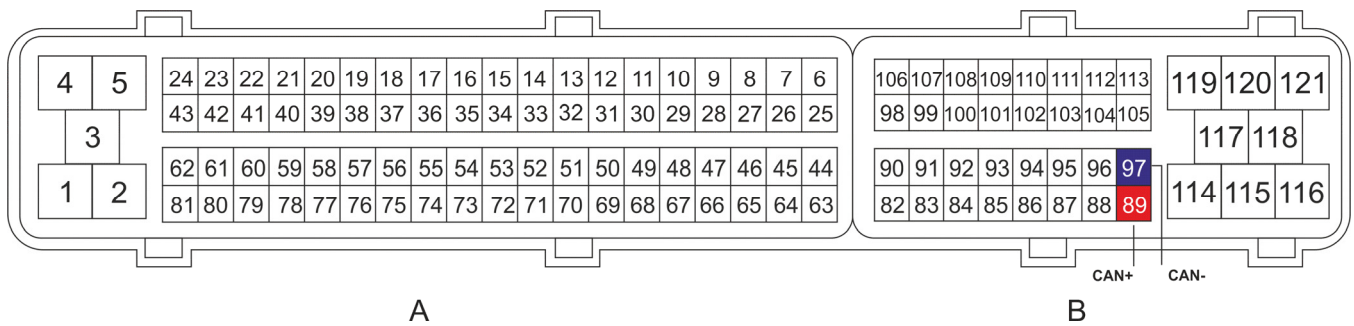


This panel appears: ensure is set up as shown below.



2 Wiring connection

MBE 9A9CAN ECU features a data transmission bus based on CAN. This is available on the ECU front connector. As shown below the connector is divided in two parts but pins are numbered in a single sequence from 1 to 121. Below you find connection table.



Connector pin	Pin function	AiM cable
B 89	CAN High	CAN+
B 97	CAN Low	CAN-

3

AiM device configuration

Before connecting the ECU to AiM device, set this up using AiM Race Studio software. The parameters to select in the device configuration are:

- ECU manufacturer "MBE"
- ECU Model "9A9CAN"

4

Available channels

Channels received by AiM devices connected to "MBE" "9A9CAN" protocol are.

ID	CHANNEL NAME	FUNCTION
ECU_1	MBE_RPM	RPM
ECU_2	MBE_THROT_VOLT	Throttle voltage
ECU_3	MBE_THROT_SIDE	Throttle position
ECU_4	MBE_BATTERY	Battery supply
ECU_5	MBE_ENGINE_TEMP	Engine coolant temperature
ECU_6	MBE_GEAR	Engaged gear
ECU_7	MBE_GEAR_VOLT	Gear voltage
ECU_8	MBE_AIR_TEMP	Intake air temperature
ECU_9	MBE_MAP_SIDE	Manifold air pressure side
ECU_10	MBE_BARO_PRESS	Barometric pressure
ECU_11	MBE_IGNITION_ADV	Ignition advance
ECU_12	MBE_INJ_TIME	Injection time
ECU_13	MBE_INJ_TUP	Injection time on upper engine bank
ECU_14	MBE_OIL_PRESS	Oil pressure
ECU_15	MBE_FUEL_PRESS	Fuel pressure
ECU_16	MBE_OIL_TEMP	Oil temperature



ECU_17	MBE_LAMBDA1	Lambda 1
ECU_18	MBE_LAMBDA2	Lambda 2
ECU_19	MBE_MANIF_AIR_P	Manifold air pressure
ECU_20	MBE_TARGET_BOOST	Boost target
ECU_21	MBE_TARGET_LAMB	Lambda target
ECU_22	MBE_LAUNCH_VOLT	Voltage at launch
ECU_23	MBE_LAUNCH_TIME	Launch timer
ECU_24	MBE_RPM_LIMIT	RPM limiter
ECU_25	MBE_INJ_SPLIT	Injection split
ECU_26	MBE_INJ_DUTY_A	Injection duty bank A
ECU_27	MBE_INJ_DUTY_B	Injection duty bank B
ECU_28	MBE_SHIFT_1	Shift light 1
ECU_29	MBE_SHIFT_2	Shift light 2
ECU_30	MBE_RED_FAN_1	RadFan1
ECU_31	MBE_RED_FAN_2	RadFan2
ECU_32	MBE_H2O_PUMP_DC	Water pump DC
ECU_33	MBE_WHEEL_SPD	Wheel speed
ECU_34	MBE_THROTTLE_ANG	Throttle angle
ECU_35	MBE_EXH_GAS_TEMP	Exhaust gas temperature
ECU_36	MBE_WASTE_GATE	Waste Gate DC
ECU_37	MBE_PEDAL_VOLT	Pedal Voltage
ECU_38	MBE_PEDAL_SITE	Pedal site