



Solo 2 GPS Lap Timer

USER GUIDE

Made in Italy



www.aim-sportline.com



Solo 2 GPS Lap Timer

1 – Solo 2 in a few words	02	7 – Data Recall	25
2 – What is in the kit?	04	7.1 – Data Recall “Speed”	25
3 – Installation, powering and accessories	06	7.2 – Data Recall “Performance”	26
4 – At power on	10	8 – Wi-Fi configuration	28
5 – Configuration menu	11	8.1 – Configuring Solo 2 as an access point (AP)	30
5.1 – Type of racing	12	8.2 – Adding Solo 2 to an existing network	33
5.2 – Track management	14	8.3 – Wi-Fi network settings	35
5.2.1 – Creating a track with Solo 2	15	8.4 – The Internet connectivity	37
5.3 – Display setup	16	8.5 – Connection issues	37
5.3.1 – Backlight	16	8.6 – Working on Mac™ with virtualized Windows™	38
5.3.2 – Pages Setup	17	8.7 – Connected device visualization issues	41
5.4 – Wi-Fi	18	9 – PC connection	42
5.5 – System settings	19	10 – Track Management	44
5.5.1 – Unit of measure	19	10.1 – Creating a track with Solo 2	45
5.5.2 – Led Bar (Type of race: speed only)	20	11 – Data download	46
5.5.3 – Date Time	21	12 – Data Analysis	47
5.5.4 – Language	21	13 – New firmware upgrade	49
5.5.5 – System info	22	14 – Technical specification and drawings	50
6 – On the track	23		
6.1 – Track page	23		
6.2 – Other pages	24		

1. Solo 2 in a few words

What is Solo 2?

Solo 2 is the new AiM GPS lap timer

Why Solo 2?

Because it features:

- integrated GPS + Glonass receiver
- a huge tracks database that Solo 2 manages to automatically select the track where you are racing
- a powerful and comfortable Wi-Fi connection
- different type of races: speed and performance
- 10 RBG LEDs that clearly show you if you are improving or not
- A huge amount of internal memory (four gigabytes) capable of recording a lot of tests

Anything else?

Of course, yes!

An app for iPhone is coming! In a few weeks you will be able to analyse essential data on your iPhone; furthermore, you will be able to see in real time all the values Solo 2 samples, upgrade its firmware, create new tracks as well as update your database, modify Wi-Fi settings.



2. What is in the kit?

Solo 2 kit includes:

- 1 - Solo 2
- 2 - Solo 2 power cable with car lighter socket
- 3 - Solo 2 power cable with AC adapter
- 4 - Solo 2 mounting bracket with screws

Solo 2 user manual
Race Studio 3 software installation CD
AiM sticker



3. Installation, powering and accessories

Thanks to its small dimensions and to the different accessories available for installation Solo 2 can be installed on any kind of motorsport vehicle.

The internal battery keeps Solo 2 alive for about 4/5 hours: please, keep in mind that the power consumption depends upon the activity of:

- Wi-Fi (about 100 mA/hour when ON)
- Backlight
- Shift Light LEDs
- GPS tracking: at the power ON, Solo 2 starts searching the satellites: this activity is rather power consuming and continues for about 40-50 seconds. After this short period, the power consumption sensibly decreases.

Solo 2 can anyway be powered by a 12V, not stabilized, external power source.



AiM provides different installation accessories, to say:

- support for roll-bar:
X46KSTG00



- support for generic tube:
X46KSTP00



- support for suction cup:
X46KSVS00

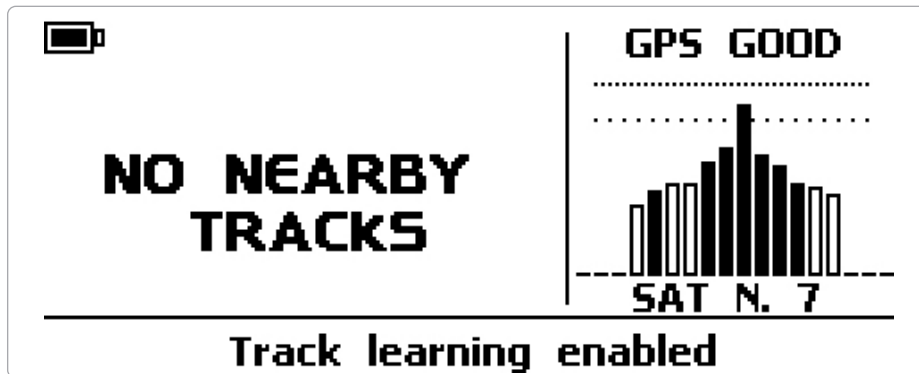


Solo 2



4. At power ON

When switched on Solo 2 shows satellite page.



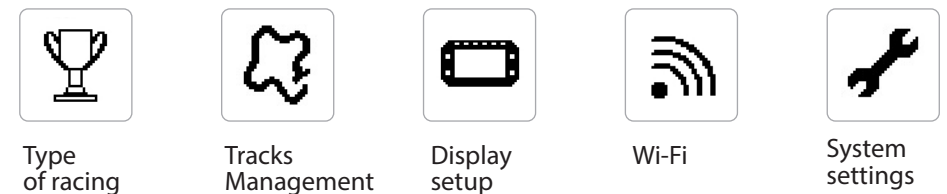
To optimize the display management, the keyboard disappears when not necessary. Please, simply press one of the pushbuttons for making it show up again.

5. Configuration menu

Before using your Solo 2 you need to set some parameters as explained here below. Press "MENU" and this page shows up.



The icons are to manage:

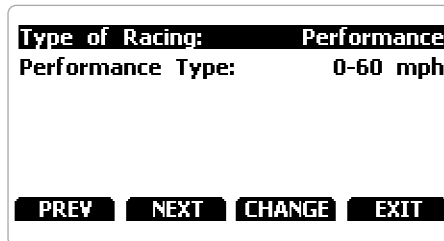




5.1 Type of racing

Solo 2 features two different type of races, each of them with different options:

- speed (left image below)
- performance (right image below)



Speed racing

Solo2 automatically selects the track in which you are performing: after having found the proper track, it may calculate and show:

- the lap times
- the predictive lap time, the time at the end of the actual lap, computed looking at the actual speed, compared with a reference lap.

The predictive lap time may be shown as an **Absolute Time** (i.e. 1:34.45) or as a **Gap** (i.e. + or - 0.25 sec), between the actual lap and a reference Lap. The Reference Lap may be:

- the best lap of the test or
- the best lap of the day

Performance racing:

This racing mode shows you different performance options according to the measure unit you set in "System settings" -> "Unit of measure" menu:

- using **imperial** unit of measure (mph) the available performance options are:
 - 0 - 60 mph
 - 60 - 0 mph
 - 1/8 miles
 - 1/4 miles
- using **decimal** unit of measure (km/h) the available options are:
 - 0 -100 km/h
 - 0 -160 km/h
 - 100 m
 - 150 m
 - 400 m
 - 1000 m



5.2 Track management

Solo 2 built in GPS receiver is used for:

- Lap time calculation
- Speed calculation
- Predictive lap time calculation
- Position on the track in Analysis.

To calculate these data the system needs to know the Start/Finish line coordinates.

Solo 2 comes with a long list of the world main tracks, list that is constantly updated by our technicians and is automatically upgraded your PC when you run our Race Studio3 software and an Internet connection is available.

Solo 2 provides two track selection modes: automatic and manual.

Automatic:

Solo 2 automatically recognizes the track you are running on, loads start/finish line and calculates lap times. This is the best mode in most cases.

Manual:

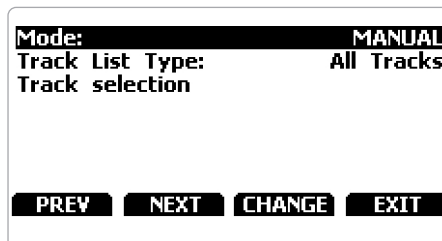
allows you to manually select the track from the internal database.

This mode is to be preferred when multiple track configurations are available nearby. In this case Solo 2 would anyway recognize the track but would need at least one complete track lap.

To be ready from the first lap manual mode would be helpful.

Both track modes provide three track list type:

- nearest: shows only tracks in a 10 km distance with max 5 tracks shown
- all tracks: shows all tracks stored in the system in alphabetical order
- custom: shows only the tracks you have previously created (learning mode)



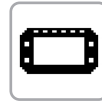
5.2.1 Creating a track with Solo 2

If you are running in a track NOT included in Solo 2 database the device switches to "learning" mode and behave this way:

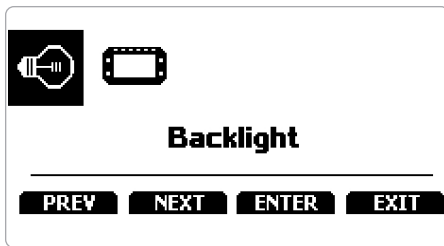
- it starts sampling all track points
- when detects that it is crossing the same points for the second time it realizes that the track is closed and sets a temporary start/finish line showing lap time each time it crosses that point;
- at the end of the session the system shows the track map with start/finish line: you can move start/finish line using Solo 2 bottom buttons;
- you can add this new map to Solo 2 database, modify start/finish line coordinates, name the track and transmit it to the PC at first PC-Solo 2 connection

For further information about track management with Race Studio 3 refer to "Track manager" user manual you find in download area/software/Race Studio 3 documentation of www.aim-sportline.com.

5.3 Display setup



Selecting this icon the page shown below shows up.



Here you can set the system backlight as well as its display pages.

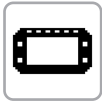
5.3.1 Backlight



You can set Solo 2 backlight as "ON" (default setting) or "OFF" as well as choose among eight different colours:



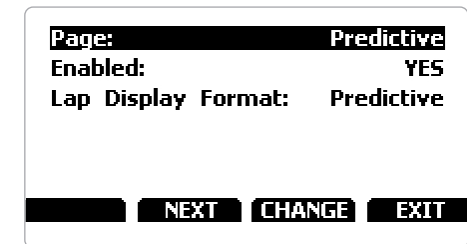
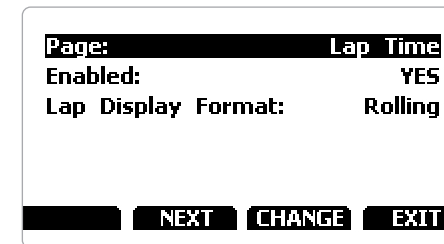
5.3.2 Pages Setup



Solo 2 can show from two up to five pages according to the type of race you set. Some pages are enabled by default and need to be set while other – custom, available only if you set type of race: speed – needs to be enabled before being set.

The Pages enabled by default are:

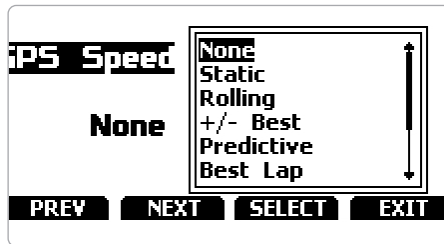
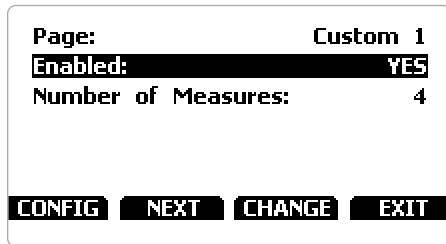
- track page (see related paragraph)
- lap time page (left image below)
- predictive page (right image below – speed race only)



Lap time page: here you can set lap time format as:

- rolling: dynamic is shown for 5 seconds when you cross start/finish line and then starts rolling again
 - static: shown steady for the entire lap; changes when crossing start/finish line
- Predictive page ("Type of race: speed" only):** here you can set lap time format as:
- predictive: shows the predicted time result
 - +/- best: shows time gap between current lap and reference lap you set in "Type of race" menu

The two custom pages (speed race only) need to be enabled as shown here below. This way “CONFIG” button appears (right image below). Press it to configure the page. Each custom page can show up to four fields. All fields can show all available options (left image below).



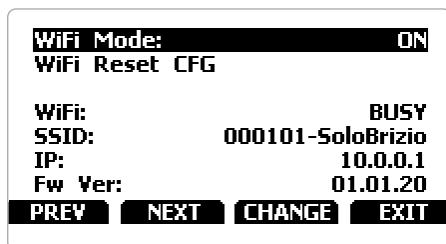
5.4 Wi-Fi



Here you can manage Wi-Fi as well as reset its configuration. Wi-Fi modes are:

- ON
- Auto: switches Wi-Fi on when the vehicle is stopped and automatically switches it off when Solo 2 starts recording (speed higher than 10 km/h for 3 seconds with a good GPS signal)
- OFF

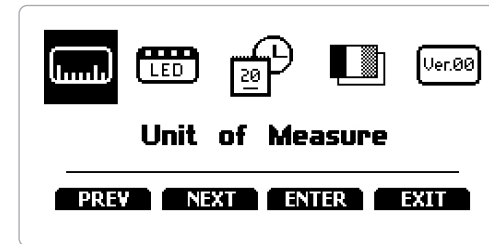
“Wi-Fi Reset CFG” allows you to reset Wi-Fi configuration and is very useful if you do not remember Wi-Fi password



5.5 – System settings



Selecting this icon you enter this page:



5.5.1 Unit of measure



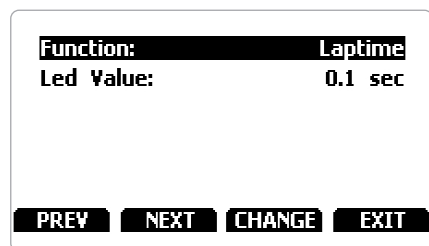
You can set the measure unit of:

- speed: km/h or mph: please remember that according to the measure unit you set here you will see different options in “Type of Race” menu if selecting “Performance” type (refer to the related paragraph for further information)

5.5.2 Led Bar (Type of race: speed only)



Selecting this icon you enter this page:



Here you can set the 10 lateral LEDs of Solo 2 function and working mode (value).

Function can be:

- Laptimer
- OFF

Led Value can be:

- 0.1 sec
- 0.2 sec
- 0.05 sec

Working mode:

Setting Laptimer mode the lateral LED switches on green or red indicating if your lap time is improving (green) or getting worse (red).

The LED values indicate the time gap to be assigned to each LED. Assuming your lap time is improving of 0.3 sec toward the reference lap:

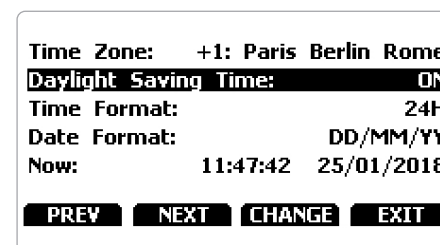
- if you selected 0.1 sec LED Value your Solo 2 will switch on 3 LEDs green;
- if you selected 0.2 sec LED value the green led will be 1;
- if you selected 0.05 LED value all your Solo 2 LED will switch on green.

5.5.3 Date Time



Here you can set the time zone of your Solo 2 as well as enable/disable "Daylight Saving time" option. Time zone is always set manually. Date and time can be shown in different format.

Time is automatically synchronized as Solo 2 receives the GPS signal.



5.5.4 Language



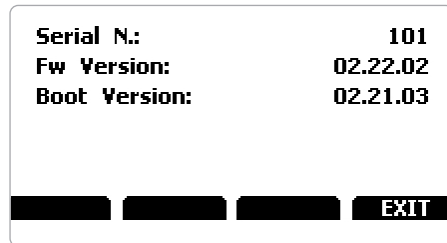
You can set Solo 2 language. Default setting is English. At present available languages are (in this order):

- English
- Italian
- Deutsch
- Spanish
- French
- Dutch
- Danish
- Portuguese
- Japanese

5.5.5 System info



This page shows serial number as well as firmware and boot version of your Solo 2.



6. On the track

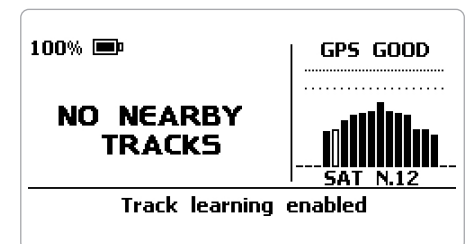
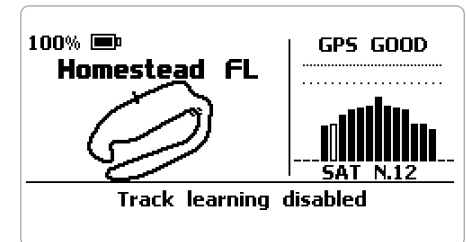
Some Solo 2 pages are available for online visualization. To scroll them press "NEXT" ("Type of Race: Speed" only). Pages can change according to the device configuration.

6.1 Track page

This is the first page that appears when you switch Solo 2 on and can be recalled pressing "TRACK" button. When you start the engine of your car it goes away automatically. It shows:

- on the left the selected track; you can select a new one manually or automatically ("MENU"/ Track Management); in case of "Automatic" selection the track is selected in dependence of the coordinates of your vehicle; in case the track you are running on is not included in your Solo 2 database the laptimer switches to "learning mode" as shown in the bottom image here on the right

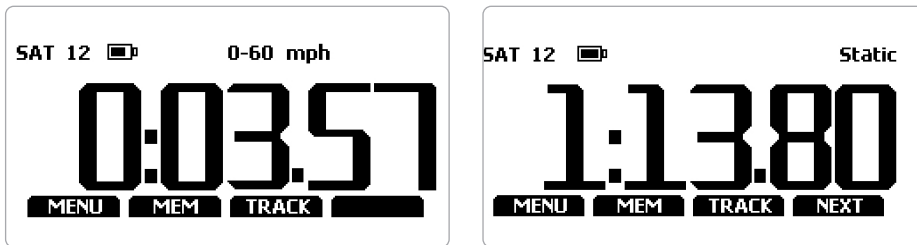
- on the right the satellite bar (visible satellites and signal level of each one) useful for evaluating the status of the GPS signal.



6.2 Other pages

Other available pages are: Laptime Page, predictive Page and two custom Pages. Use "NEXT" button to scroll them.

Laptime page is shown no matter which type of race you set your Solo 2 on. It shows the lap time.



Predictive page: shows the predicted current lap time in the format you set:

- +/- in relation to the Reference Lap
- Predicted lap time

Custom pages you may freely customize up to two pages for showing all the information you wish. The pages needs to be created and enabled as explained in Pages setup paragraph.

7. Data Recall

At the end of the test you can recall sampled data pressing "MEM". Data Recall is different according to the type of race you set your Solo 2 on.

7.1 Data Recall "Speed" mode

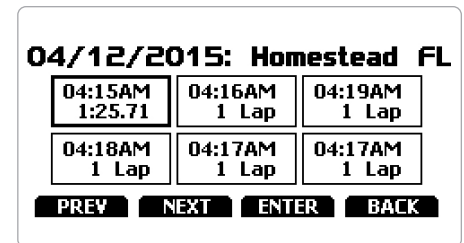
If you set "Type of Race – Speed" data recall shows these pages.

The first is "Summary page". Select the session you want to see and press "ENTER"



Once the session selected you see all tests in a box showing time of the test and best lap of the test.

Select the test you want to see and press "ENTER".

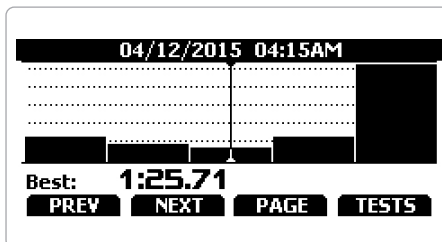


Here you see the three best lap of the test with max speed value per every lap. Press "PAGE"

04/12/2015 04:15AM		
Lap	Best Laps	mph
4	1:25.71	156.9
3	1:25.86	158.1
5	1:26.12	157.5

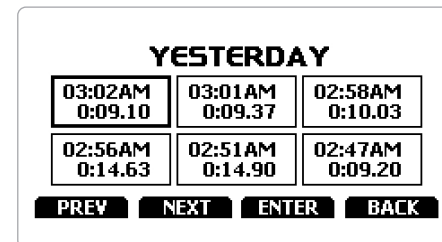
PAGE TESTS

This page is a histogram test summary. Moving the cursor left and right you can see all laps.



"Session page" shows you all the laps of the session from the most recent backwards.

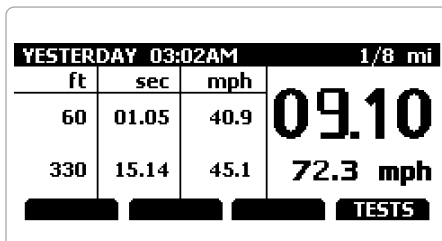
Press "ENTER" to enter "TEST" page.



7.2 Data Recall "Performance" mode

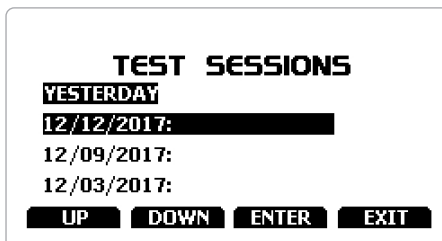
If you set "Type of Race – Performance" data recall shows these pages. If your test is max two hours old you are automatically forwarded to the "Test" page. This page shows:

- the selected performance top right (1/8 mile in the example)
- the lap time and the speed in the right box (9.10 and 72.3 mph)
- a table showing length, time and speed at the of the performance and in a set split on the left
- press "TESTS"



You come to "Test sessions summary" page, that is the first one you see if your last test is more than 2 hours old. It shows all the sessions from the most recent backwards.

Select the session you want to see and press "ENTER".



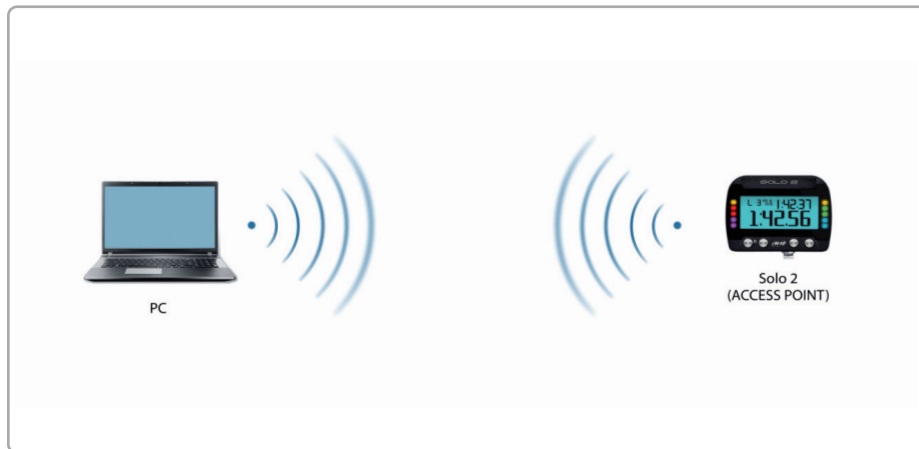
8. Wi-Fi configuration



Solo 2 configuration can be made only using Race Studio 3 software. Two possible Wi-Fi modes are available.

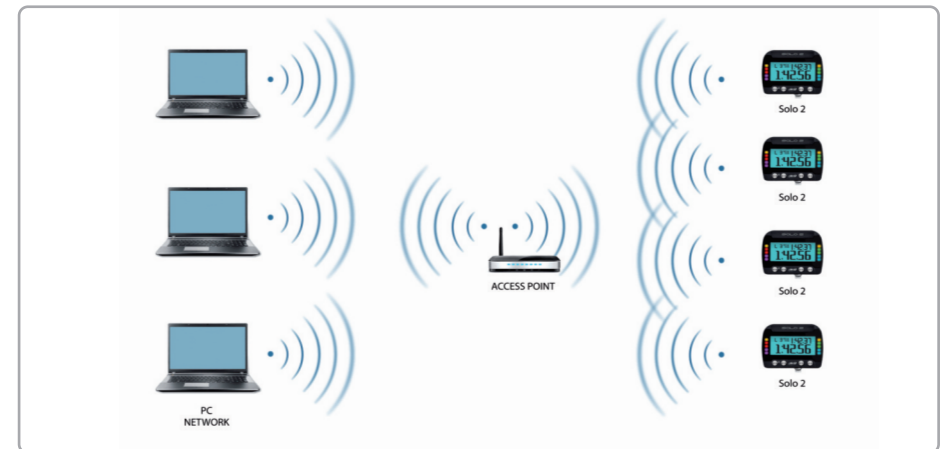
1 – As an Access Point (AP – default)

This is the ideal configuration if you have one only device and one only computer. In this situation your Solo 2 creates a Wi-Fi network and works as an Access Point you can connect your PC to.



2 – Existing network (to connect to an existing Wi-Fi network – WLAN)

This mode is complex and implies an external access point (AP) but it is also more flexible and powerful because allows you to communicate with more than one device and with more than one computer in the same network. Solo 2 and the PC must connect to an existing Wi-Fi network made by a device that works as an external access point.



When working in WLAN mode Solo 2 has two available security levels:

- network authentication: network password
- device authentication: Solo 2 password

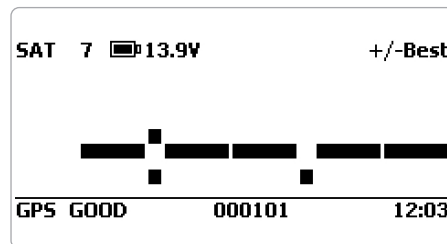
Both levels allow you to use different strategies. A PC in WLAN, for example, can see several AiM devices but can communicate only with those he knows the password of. If you forget the password you can reset Wi-Fi configuration from Solo 2 menu as explained before.

8.1 Configuring Solo 2 as an access point (AP)

This is Solo 2 default configuration and is the easiest and most direct connection mode, ideal if you want to communicate with one Solo 2 using one PC. It is free and so completely accessible by anyone. Please set an access password as soon as possible.

To establish a Wi-Fi connection:

- ensure that the Wi-Fi is enabled
- read your Solo 2 Name

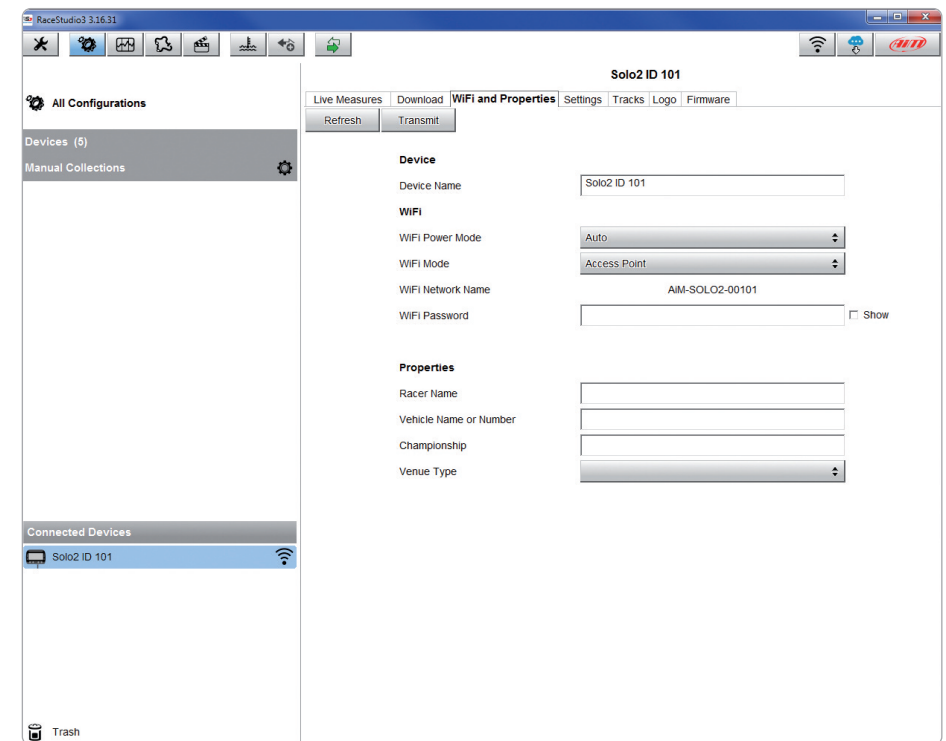


- run Race Studio 3
- click Wi-Fi icon and select your device
- in a few seconds the connection is established



To set other parameters create a unique password to protect your device/your network. With a password, the communication is safe and encrypted using WPA2-PSK standard.

Characters allowed in the password are all letters, also capital, all digits and these characters: '+- _(){}\$£!?^#@*\\"=~/:;/%"
"Space" type can be used if it is not the first one because this could cause incomprehension in some Windows™ versions.



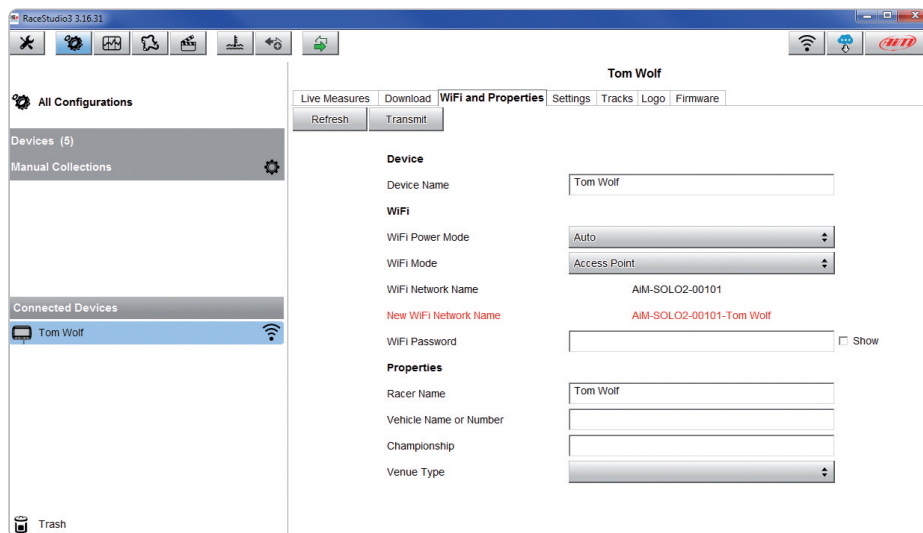
This AP or SSID name is unique for your device.
An example of name is: "AiM-Solo2-00101" where:

- "AiM" is the prefix of all AiM devices
- "Solo 2" is the device identifier
- "00101" is your device serial number assigned by the factory.

To make your device more recognizable you can add a name to the SSID. The limit is of eight characters. Allowed characters are all letters, capital too, all digits and these characters: '+ - _ () [] {}!'. "Space" type can be used provided that it is not the first one because it can cause incomprehension in some Windows™ versions.
If, for example you add the driver's name, Tom Wolf, the network name (SSID) becomes:

"AiM-Solo2-00101-TomWolf"

Once all parameters set click "Transmit".
Solo 2 reboots and is configured with the new parameters.
If Solo 2 is protected by a password, as recommended, Race Studio 3 will ask that password to authenticate.



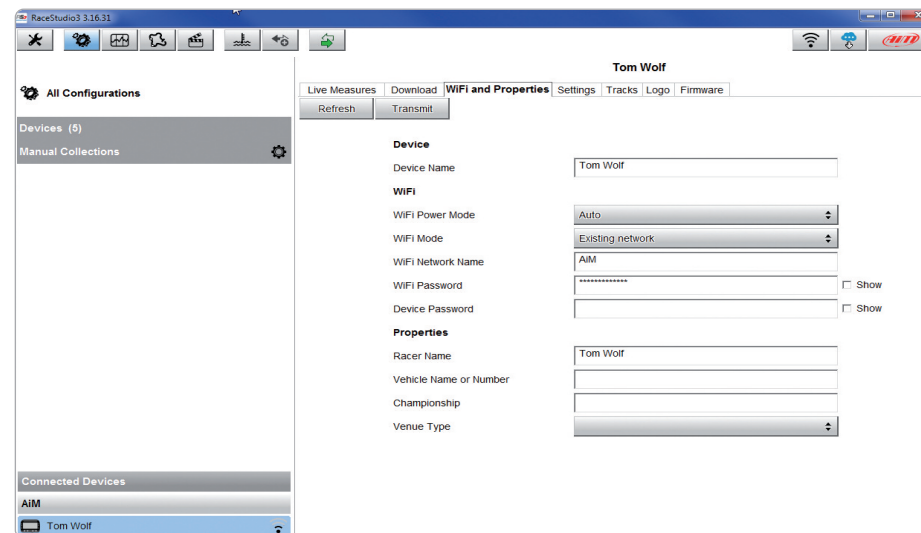
Please Note: the same Wi-Fi connection can be created with the operative system tool. Once the device has been authenticated in the Wi-Fi network you can communicate with it using Race Studio 3.

8.2 Adding Solo 2 to an existing network

This situation is ideal for a team with multiple drivers and staff members and is desired to communicate with one or more AiM devices using the same PC network. Each Solo 2 can have its password that adds another security and privacy level to the network. Race Studio 3 will show all Solo 2 connected to the same network under "Connected devices" label, bottom left of the software page: click your device.
Enter "Wi-Fi and properties" tab and set it on "Existing Network"; fill in network name, network password and device password.
Transmit the network settings to your device clicking "Transmit": your device reboots and joins that network.

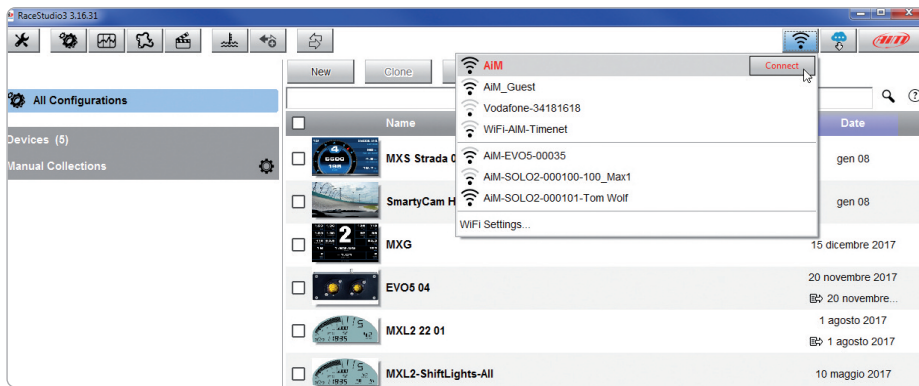
Please note: the only admitted password are those following WPA2-PSK standard.

To complete this procedure use Race Studio 3 software as here explained.

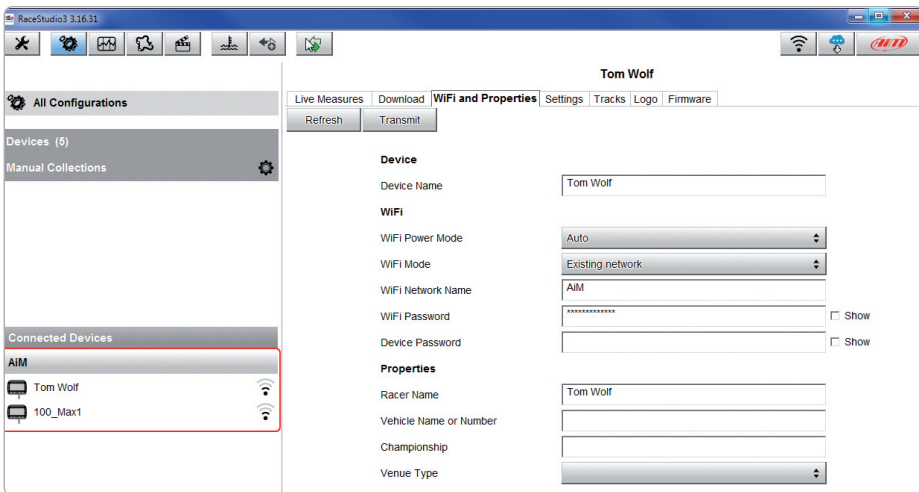


Here above you see a device "Solo2-00101" that switched from AP to WLAN mode (Existing Network). Network name is "AiM" and does not work with free access because it is protected by a password.

To obtain connectivity on the device the PC has to be authenticated to the same network as shown here below.



When the PC is authenticated to the network called "AiM" it can see all devices you configured to access the same network. In the image below two AiM devices are connected to the same "AiM" WLAN.



8.3 Wi-Fi network settings

In this chapter you find a short description of how to configure a WLAN including AiM devices and a PC.

Here below is an example of configuration.

ROUTER SETTINGS	
Use this section to configure the internal network settings of your router. The IP Address that is configured here is the IP Address that you use to access the Web-based management interface. If you change the IP Address here, you may need to adjust your PC's network settings to access the network again.	
Router IP Address :	<input type="text" value="192.168.0.1"/>
Subnet Mask :	<input type="text" value="255.255.255.0"/>
Device Name :	<input type="text" value="Network_1"/>
Local Domain Name :	<input type="text"/> (optional)
Enable DNS Relay :	<input checked="" type="checkbox"/>
DHCP SERVER SETTINGS	
Use this section to configure the built-in DHCP Server to assign IP addresses to the computers on your network.	
Enable DHCP Server :	<input checked="" type="checkbox"/>
DHCP IP Address Range :	<input type="text" value="192.168.0.2"/> to <input type="text" value="192.168.0.6"/>
DHCP Lease Time :	<input type="text" value="10080"/> (minutes)
Always Broadcast :	<input checked="" type="checkbox"/> (compatibility for some DHCP Clients)
NetBIOS announcement :	<input type="checkbox"/>
Learn NetBIOS from WAN :	<input type="checkbox"/>
NetBIOS Scope :	<input type="text"/> (optional)
NetBIOS node type :	<input checked="" type="radio"/> Broadcast only (use when no WINS servers configured) <input type="radio"/> Point-to-Point (no broadcast) <input type="radio"/> Mixed-mode (Broadcast then Point-to-Point) <input type="radio"/> Hybrid (Point-to-Point then Broadcast)
Primary WINS IP Address :	<input type="text"/>
Secondary WINS IP Address :	<input type="text"/>

For better network performances, we suggest the use of a network device equipped with a DHCP server and using 3x3 MIMO technology like, for example a Linksys AS3200.

To maximize the bandwidth, you should not allow the Internet on this WLAN; this means the DHCP server should be configured without any DNS address nor gateway by default.

The parameters for the device network configuration in this example are:

■ **Wireless network name: network_1**

It means that the WLAN network name is "network_1." A PC has to be authenticated in this network to interact with any AiM device of this network.

■ **Gateway address: 192.168.0.1**

primary DNS server: 0.0.0.0

secondary DNS server: 0.0.0.0

(These settings prevent Internet connectivity on this WLAN.)

■ **Subnet mask: 255.255.255.248**

Enable DHCP server: yes

DHCP IP address range: 192.168.0.2 to 192.168.0.6

These settings enable a DHCP server running on this WLAN and provide an IP address in a 2-6 range. This means that this network allows 5 network hosts.

The number of devices on a WLAN network depends on the subnet mask. Here below you see typical examples of network masks and IP addresses range.

The configuration in bold is the one we suggest (if a greater number of devices is not needed), being the one that makes it easier and quicker for Race Studio 3 the identification of the devices in the network.

Subnet mask:	IP address range:	Number of devices:
255.255.255.0	192.168.0.1 – 254	254
255.255.255.128	192.168.0.1 – 126	126
255.255.255.192	192.168.0.1 – 62	62
255.255.255.224	192.168.0.1 – 30	30
255.255.255.240	192.168.0.1 – 14	14
255.255.255.248	192.168.0.1 – 6	6

8.4 The Internet connectivity

For an optimal speed of your AiM device(s) we recommend not to allow the Internet on the same network and to set the WLAN in the same way.

You can of course allow the Internet access on your network but this would degrade the communication.

This slightly slower speed can be suitable for your needs but you can also have a second Wi-Fi connection using an additional hardware (NIC).

This configuration would provide an optimal speed of the data network of your AiM device(s) and at the same time would provide an internet connectivity with the second NIC.

8.5 Connection issues

It can occur that MyChron5 is correctly connected to Race Studio 3 via Wi-Fi but the user interface does not show it. This may be because Wi-Fi port setting is set with a static IP.

To switch it to dynamic (DHCP):

- open "Network and sharing centre" in the Windows™ search engine
- right click on the Wi-Fi connection and a panel shows up
- select "Properties" option
- double click on "Internet Protocol version 4 (TCP/IPv4)"
- verify that option "Obtain an IP address" is active

For further information refer to FAQ section, Wi-Fi of www.aim-sportline.com.

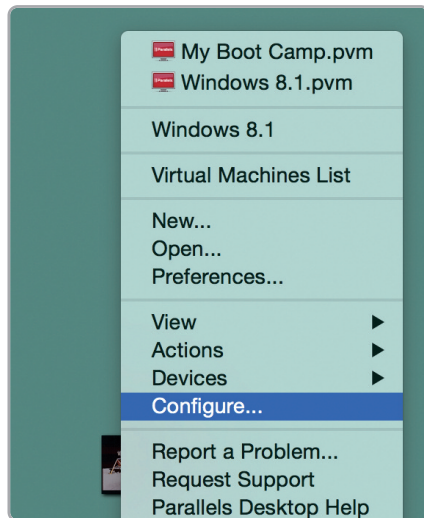
8.6 Working on Mac™ with virtualized Windows™

Race Studio 3 only works on Windows™ operative systems; Mac users can eventually use a virtualized Windows™ machine.

The main problem is that the host OS (Mac) must share its Wi-Fi interface with the virtualized operative system (Windows) as Ethernet interface and not as Wi-Fi interface.

Configuring Parallels(™)

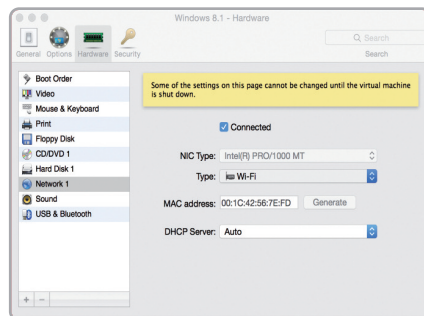
Select "Configure... in Parallels "Menu".



Press "Hardware" – top on the page that shows up – and select "Network" in the drop-down menu on the left.

Right on the configuration panel set "Type" field on "Wi-Fi".

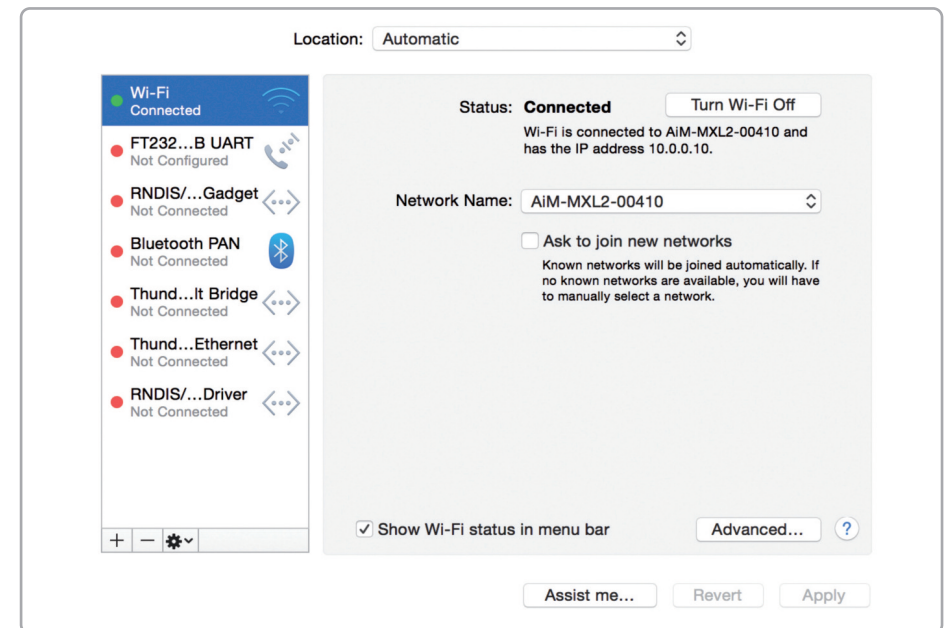
Then select the device you want to communicate with.



To ensure that the communication works select "Open Network preferences..." menu.

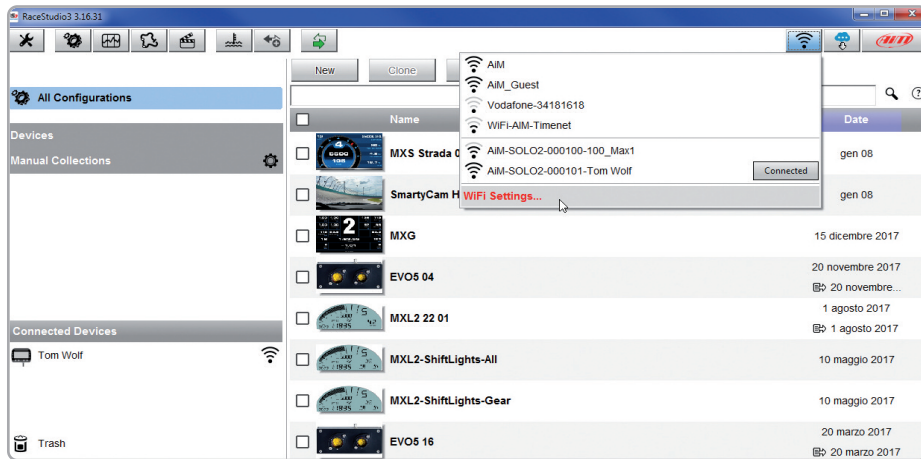


Verify that the status in the window that shows up is "Connected" and that the IP address associated is, for example, 10.0.0.11, 10.0.0.12, or generically 10.0.0.x.

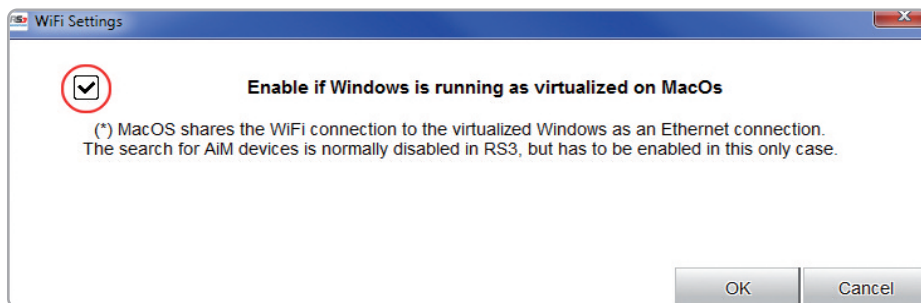


To enable Race Studio 3 correctly working on a Mac with virtualized Windows™:

- press Wi-Fi icon
- select “Wi-Fi Settings...” icon



- enable the checkbox shown here below.



8.7 Connected device visualization issues

It may occur that using Race Studio 3 on a Mac with virtualized Windows the device connected via Wi-Fi takes some time to be shown in the network or is not shown at all. This is why we always suggests using an Wi-Fi (WLAN) router.

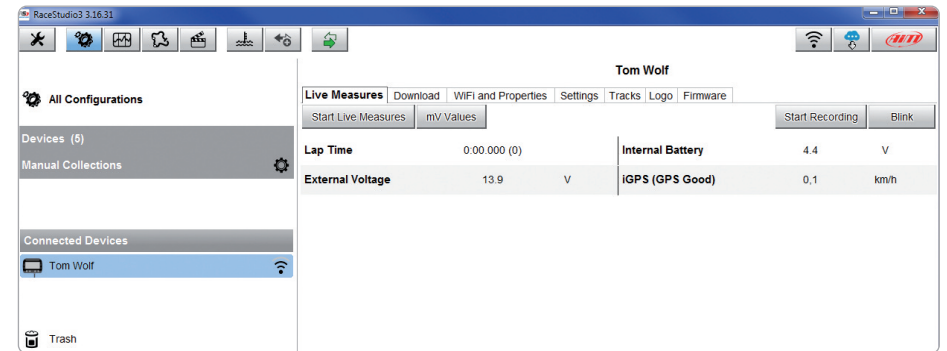
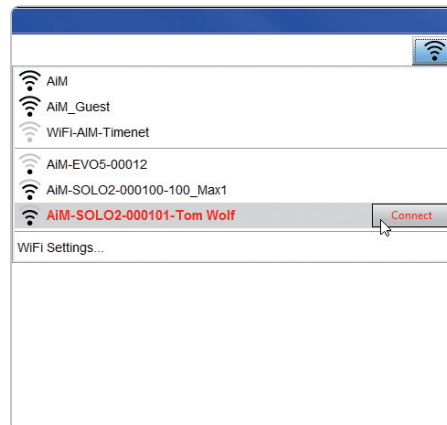
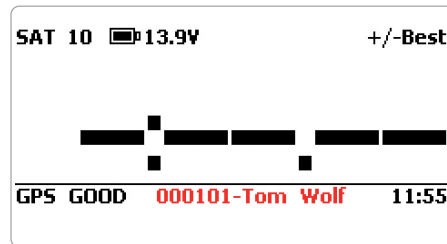
This router work as an Access Point allowing more external devices to connect to its network. Solo 2 Wi-Fi configuration is to be set on Existing Network as explained in the related paragraph.



9. PC connection

Solo 2 can be connected to the PC only via Wi-Fi. To do it:

- check that Solo 2 Wi-Fi is set on "AUTO" or on "ON"
- read your Solo 2 name – mid of Solo 2 home page bottom line – or look for it in "System Information" page.
- click Race Studio 3 Wi-Fi icon and select your Solo 2.



Once the connection is established you have these options:

- Live Measures: to check all Solo 2 channels;
- Download: to download data, see the related chapter;
- Wi-Fi and Properties: to manage the Wi-Fi configuration – see the related chapter;
- Settings to:
 - set date format
 - enable/disable daylight time
 - set time format and time zone
 - set backlight colour
 - enable/disable night vision
- Tracks: to manage the tracks stored in the device memory
- Logo: transmit/receive the logo that shows up when switching Solo 2 on; supported image format are JPEG or BMP; always use the most recent Windows™ versions (Windows8 or Windows10) whose graphic libraries are more updated
- Firmware: to check or update your Solo 2 firmware version.



10. Track Management

Solo 2 built in GPS receiver is used for:

- Lap Time calculation
- Speed calculation
- Predictive lap time calculation
- Position on the track in analysis

To calculate these data the system must know the start/finish line coordinates. Solo 2 comes with a long list of the world main tracks. The tracks are constantly updated by our technicians and are automatically loaded on your PC when you run our software Race Studio 3.

Solo 2 provides two track selection modes: automatic and manual.

Automatic:

Solo 2 automatically recognizes the track you are running on, loads the start/finish line and calculates lap times.

This is the best mode in most cases.

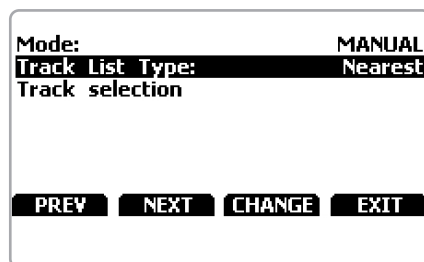
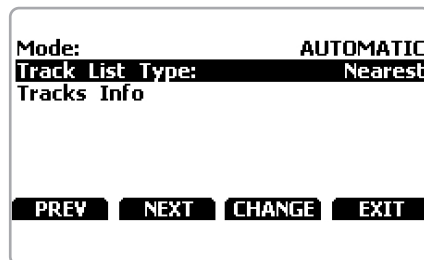
Manual:

allows to manually select the track from the internal database.

This mode is to prefer when multiple track configurations are available nearby. In this case Solo 2 would recognize the track anyway but would need at least one complete track lap. To be ready from the first lap manual mode would be helpful.

You can scroll the list of available tracks choosing among these options:

- nearest: shows only tracks in a 10 km distance
- all: shows all tracks stored in the system in alphabetical order
- custom: shows only the tracks you have previously created (learning mode)



10.1 Creating a track with Solo 2

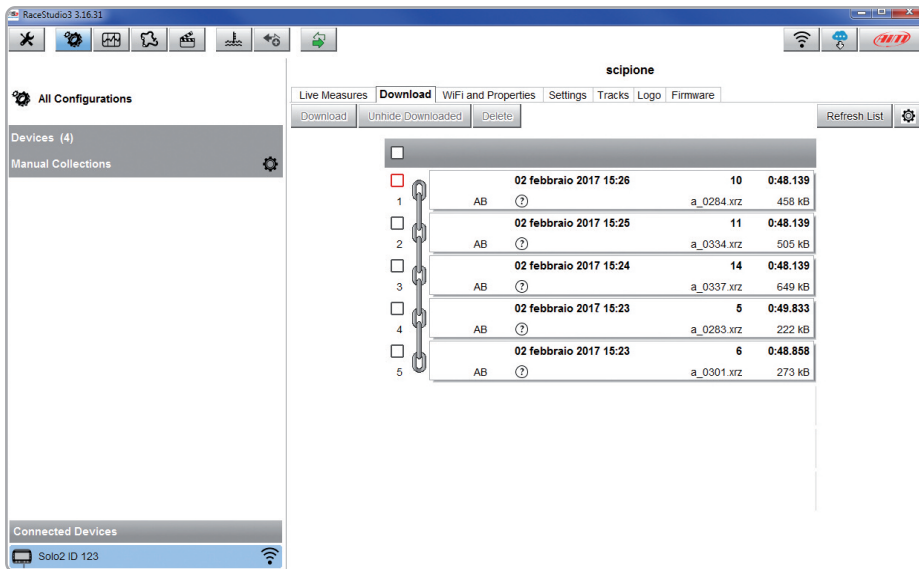
If you are running in a track NOT included in Solo 2 database the device switches to “learning” mode and behave this way:

- it starts sampling all track points
- when detects that is crossing the same points for the second time it realizes that the track is closed and sets a temporary start/finish line showing lap time each time it crosses that point;
- at the end of the session the system shows the track map with start/finish line: you can move start/finish line using Solo 2 buttons
- you can add this new map to Solo 2 database, modify start/finish line coordinates, name the track and transmit it to the PC at first PC-Solo 2 connection.

For further information about track management with Race Studio 3 refer to “Track Manager” user manual you find in download area /software/Race Studio 3/documentation of www.aim-sportline.com.

11. Data download

Once Solo 2 - PC connection is established activate “Download” tab to download sampled data.

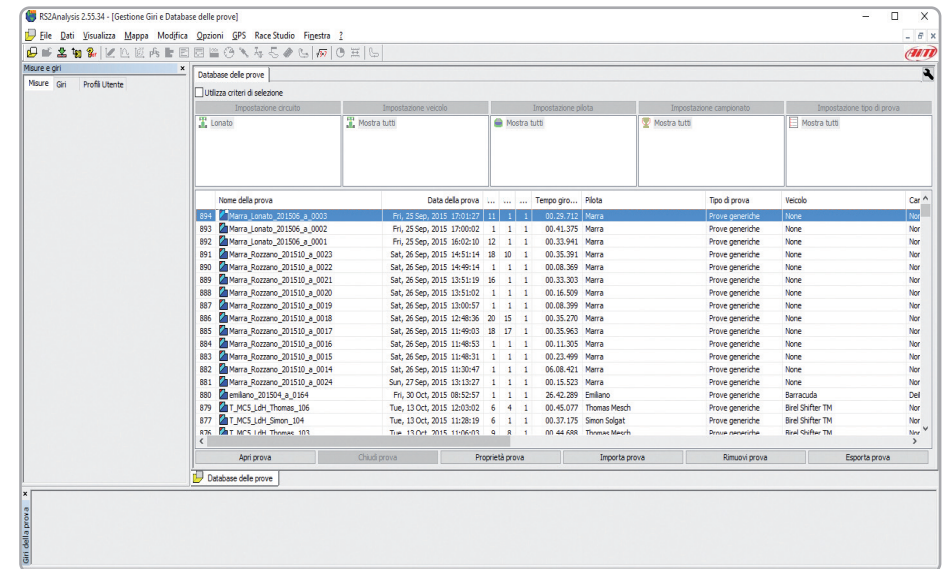


This page shows all information about the files stored in the system: number of laps, best lap, date/time and file dimensions.

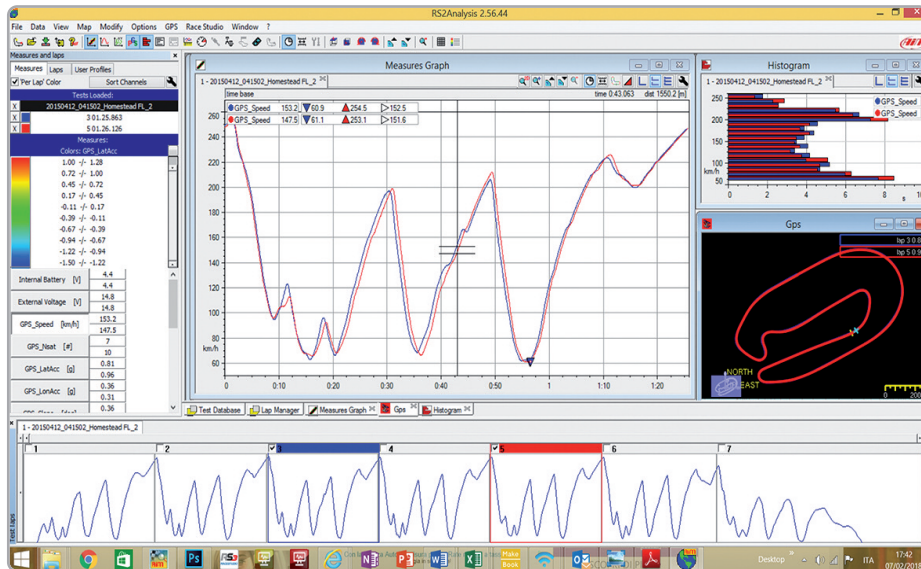
Select one or more files and press “Download” to download and analyse them.

12. Data Analysis

When data have been downloaded press Analysis icon and Race Studio Analysis software will open showing this page.



Select your file double clicking on it and start analysing it. A lot of pages, graphs and images will help you analysing your data in the best way.

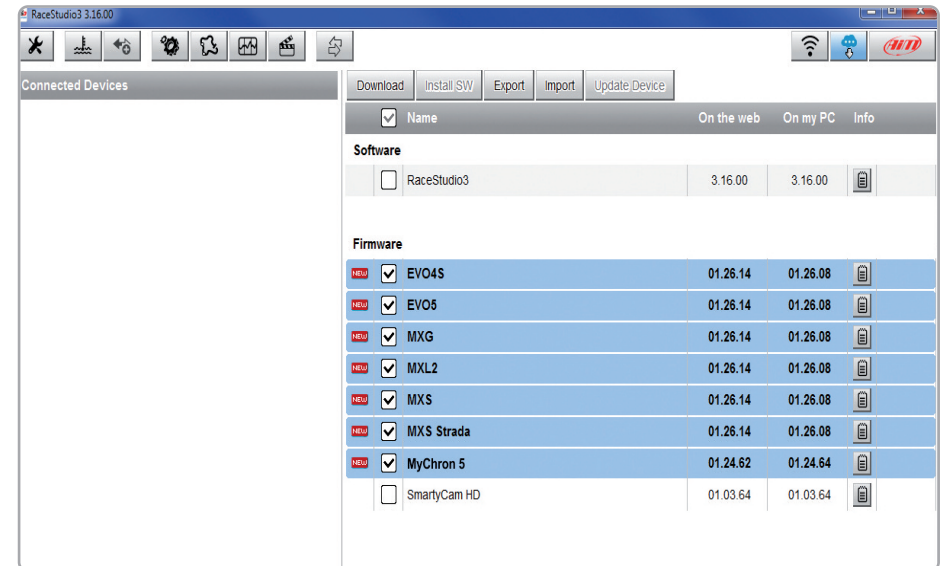


13. New firmware upgrade

Our technicians and engineers are constantly working to improve both the firmware (the application that manages your device) and the software (the application you install on your PC).

Each time a new firmware and/or software version is available the icon here above appears with an arrow indicating that something is available for download (otherwise the icon only shows the cloud).

Click it and freely download the new applications.



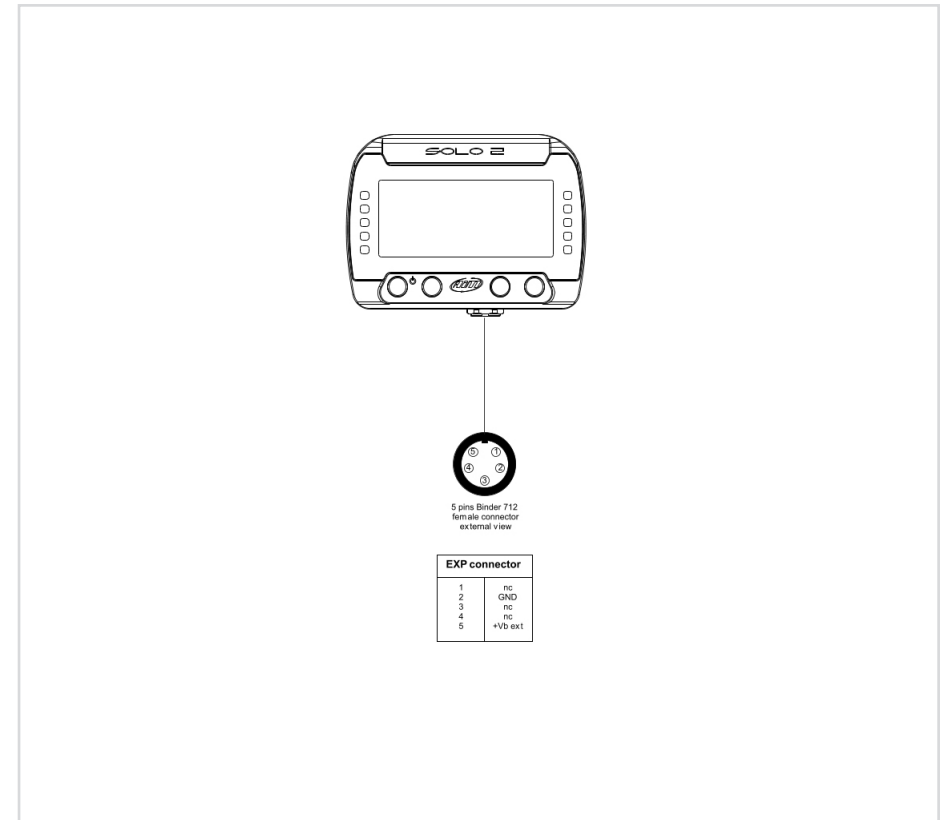
Once the new firmware has been downloaded, connect your device to the PC via Wi-Fi to perform a firmware upgrade.

In a few seconds, the device is ready.

14. Technical specification and drawings

■ Display	Graphical
■ Display resolution	238 x 99 pixels
■ Display pages	Up to 5 freely configurable
■ Backlight	7 configurable RGB colour
■ ShiftLights/alarms LEDs	10 configurable RGB LEDs
■ Integrated track database	Yes
■ Inertial platform	Internal 3 axis $\pm 5g$ accelerometer + 3 axis gyro + 3 axis magnetometer
■ Wi-Fi connection	Yes
■ Integrated GPS	10Hz GPS+Glonass
■ External power	12V
■ Memory	4GB
■ Battery type	Rechargeable Lithium
■ Pushbuttons	Metallic
■ Weight	240g battery included
■ Dimensions	98x73.7x30.2mm
■ Waterproof	IP67
■ Analysis software	Race Studio Analysis freely downloadable from www.aim-sportline.com

Solo 2 pinout





Our web site, www.aim-sportline.com is constantly upgraded. Please, refer to it for downloading the last release of our documentation

