

SENSOR DOCUMENTATION	20/04/2004	PRESSURE	PRESSURE 100 PSI
Notes: Pressure 100 PSI sensor technical documentation, dimensions and pinout. – Version 1.00			

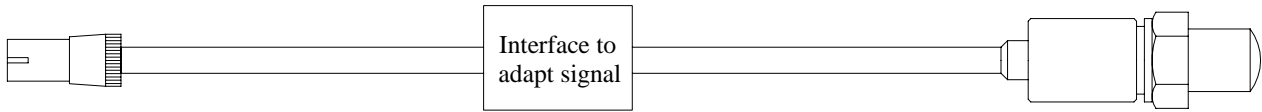


Figure 1: Pressure 100 PSI sensor

Introduction

The **Pressure 100 PSI** sensor can be used to measure the pressure of oil or fuel. The use of this sensor allows You to keep under control the fuel / oil pressure. Due to its small dimensions, this sensor fits particularly bikes installations. It has a Withworth 27 NT threading

Installation notes

- The **Pressure 100 PSI** sensor is resistant to shock but can become critical to vibrations.
- Make sure that the sensor is not installed too close to heat sources.
- Do not place the sensor near to sources of interference like ignition coils, alternators and plug leads;
- Please install the sensor along the oil / fuel circuit using stock thread holes or a self made thread adapter

Software

Once the **Pressure 100 PSI** has been installed it is necessary to set it in the gauge's configuration. To do so, please use **Race Studio 2**, the software properly developed by Aim to configure your data logger and analyze stored data.

Race Studio 2

In **Race Studio 2** main window, reported below, You can choose the gauge where You want to install the sensor. Select Your gauge and press "*System manager*" button.

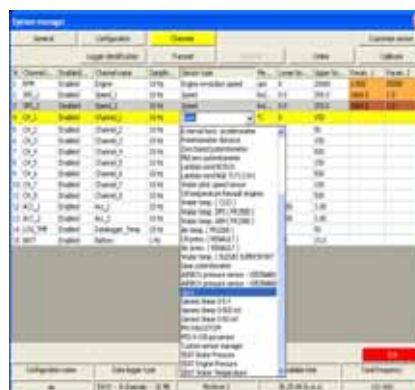


The following screenshot appears.



Sensor configuration

In "*System Manager*" main window, please press "*Channels*" button to set the sensor you have installed on your vehicle. The following screenshot appears.



To set a sensor, You have to double-click in the box corresponding to "*Sensor type*" column and to "*Ch_x*" (where x represents the channel number) row: a menu like the one reported in the above figure appears.

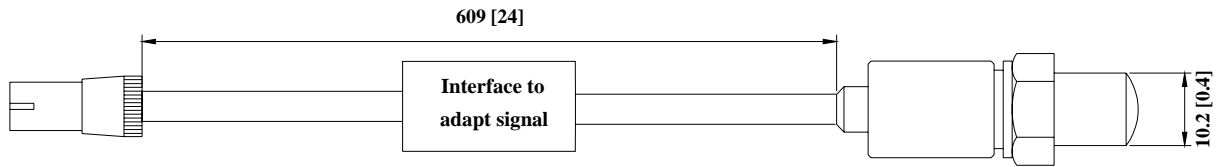
You can choose between different kind of sensors.

Please set the "MSI 0-100 PSI" sensor.

Please note: 100 PSI corresponds to 6.9 Bar

Once you have set the correct sensor type, please transmit the configuration to your gauge pressing "*Transmit*" button.

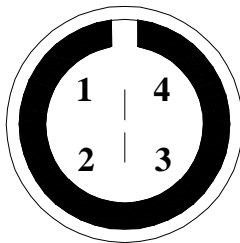
Dimensions



Dimensions in millimetres [inches]

Connector details

Pin	Function	Pin	Function
1	Pressure	3	V Battery
2	GND	4	N.C.



Male binder connector pinout; external view

Specifications

Electrical characteristics	Value
Sensor's measure range	0-100 PSI (0-6.9 Bar)
Sensor's Accuracy	< 1% full scale

Mechanical characteristics	Value
Threading	Withworth 27 NT
Locknut dimensions	16 mm
Operating temperature range	From -40° to +85°C
Weight	60 g with cable
Housing	Anodised aluminium
Cable length	609 mm